

# Type C<sub>(A)</sub>

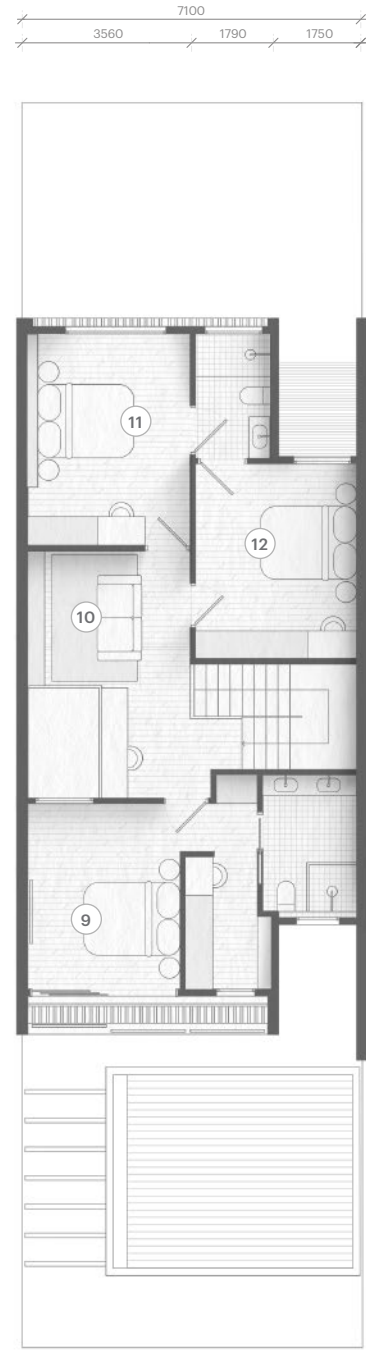
23' x 85'



All drawings and illustrations contained herein are artist's impressions only.  
All plans and specifications are subject to changes by the relevant authorities and / or the developer's architect.

Double Storey  
Courtyard Home

4R 3B  
 

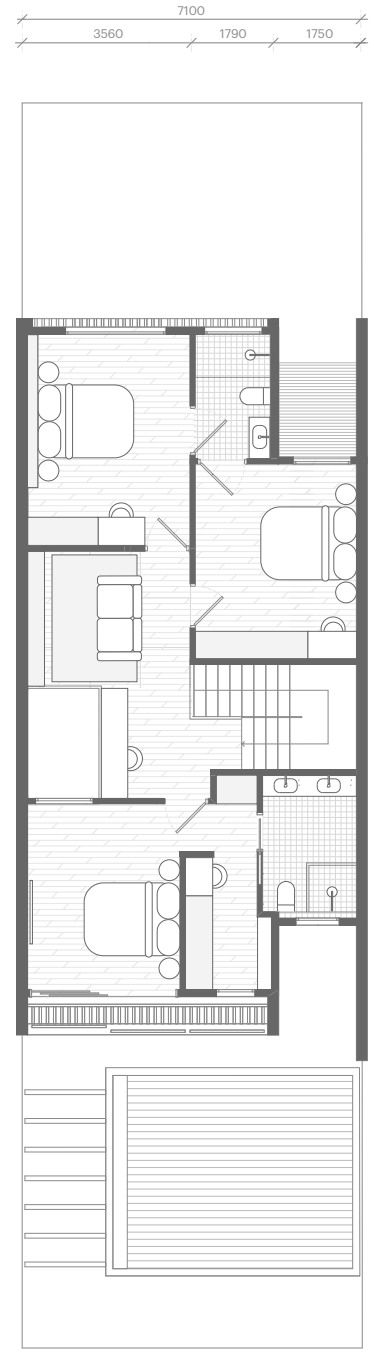
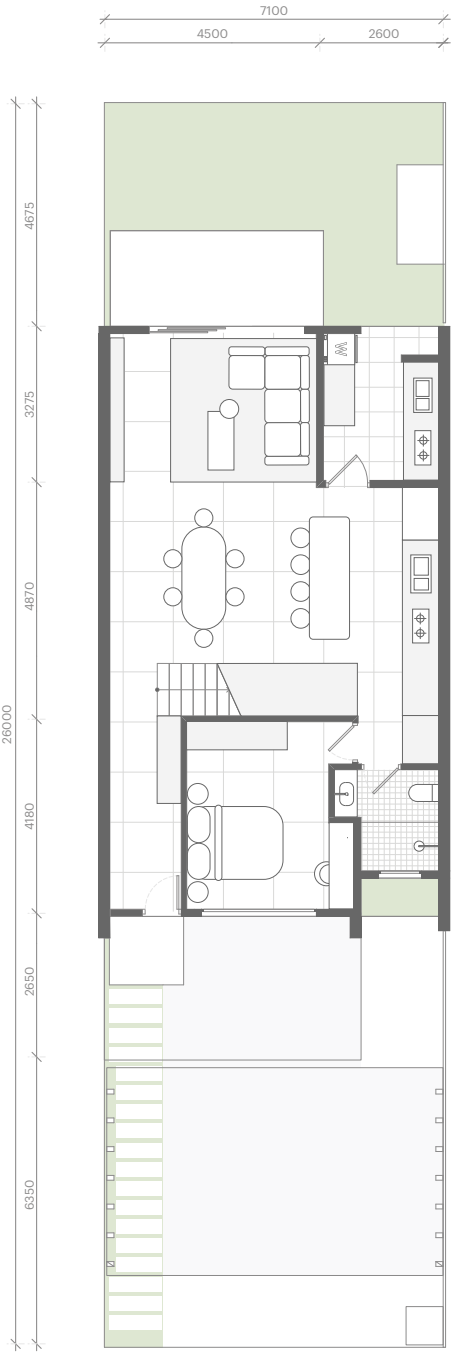


Type C(A)

**Built-up Area**  
2,245 sqft

- 1 Car Porch
- 2 Foyer
- 3 Living Area
- 4 Dining Area
- 5 Dry Kitchen
- 6 Wet Kitchen
- 7 Guest Room
- 8 Patio
- 9 Master Bedroom
- 10 Bedroom 2
- 11 Bedroom 3
- 12 Bedroom 4





Type C(A)