

Type C_(B)

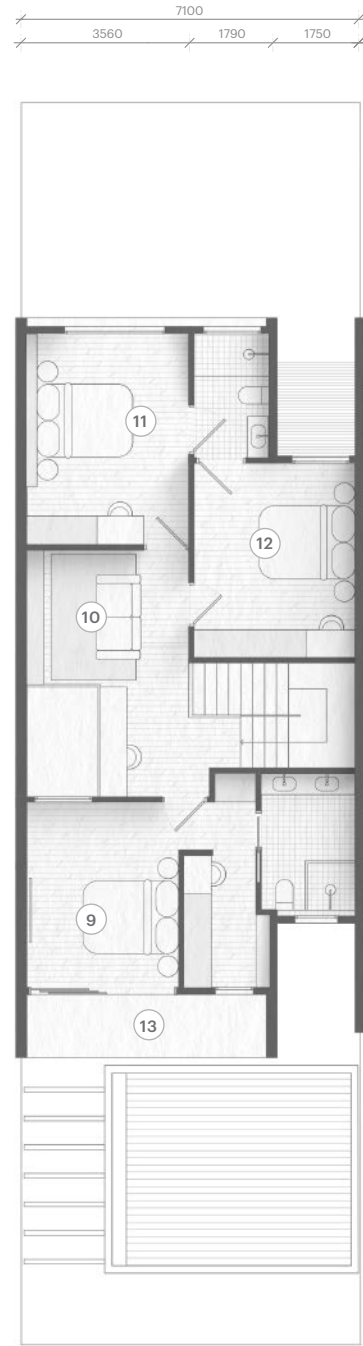
23' x 85'



All drawings and illustrations contained herein are artist's impressions only.
All plans and specifications are subject to changes by the relevant authorities and / or the developer's architect.

Double Storey
Courtyard Home

4R 3B
 

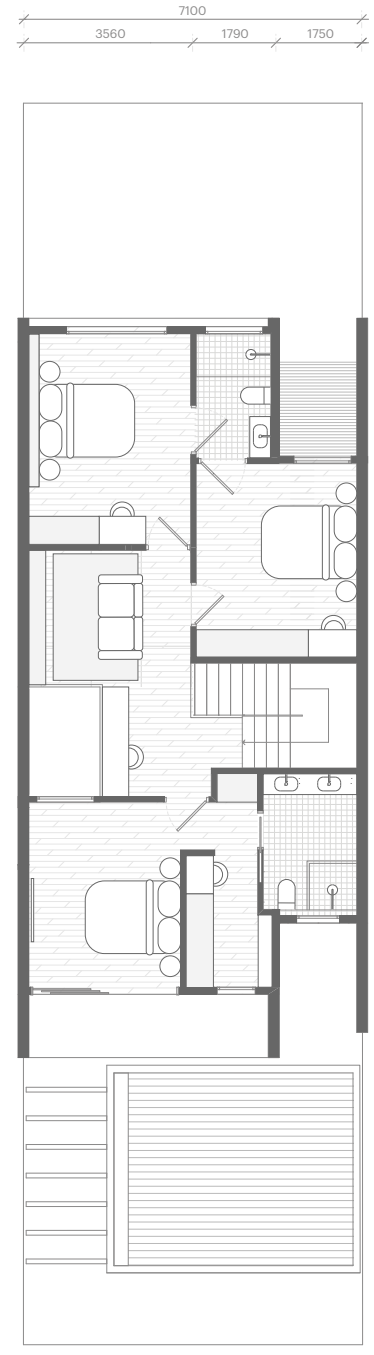
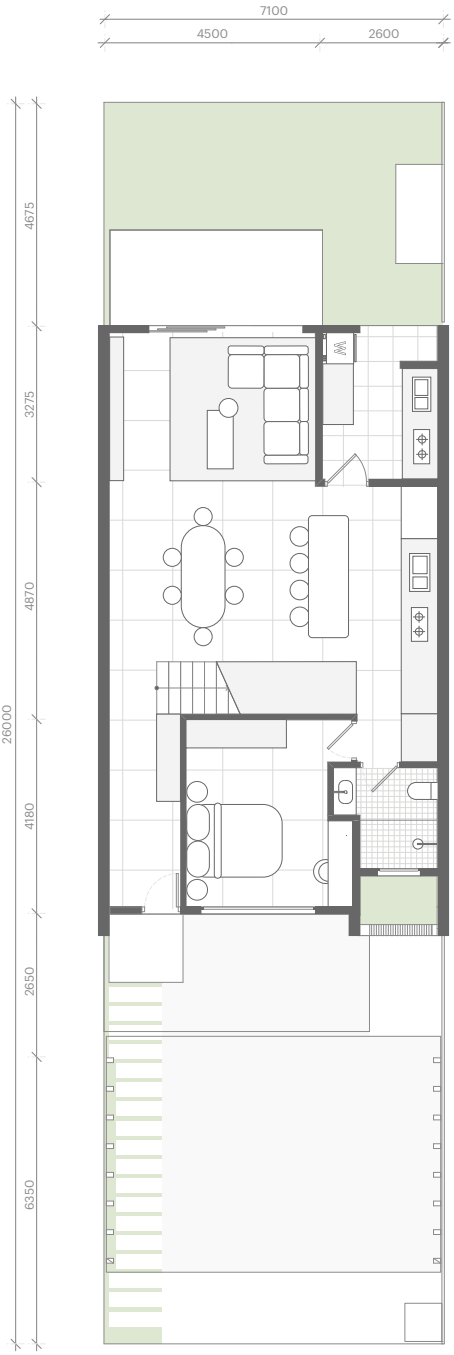


Type C(B)

Built-up Area
2,278 sqft

- ① Car Porch
- ② Foyer
- ③ Living Area
- ④ Dining Area
- ⑤ Dry Kitchen
- ⑥ Wet Kitchen
- ⑦ Guest Room
- ⑧ Patio
- ⑨ Master Bedroom
- ⑩ Bedroom 2
- ⑪ Bedroom 3
- ⑫ Bedroom 4
- ⑬ Balcony





Type C(B)