

Type C

51' x 89'



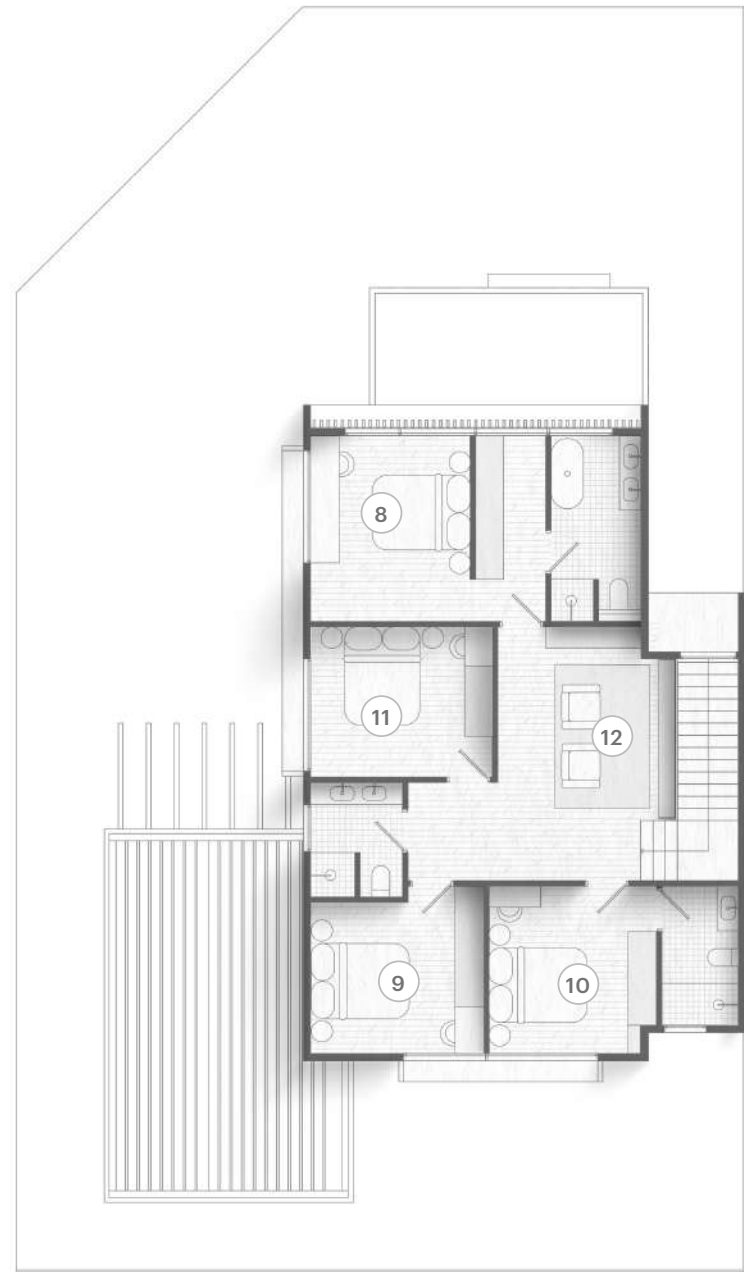
All drawings and illustrations contained herein are artist's impressions only.
All plans and specifications are subject to changes by the relevant authorities and / or the developer's architect.

Sub Lot No.
23

Double Storey
Duplex

5R


4B

Built-up Area
3,181 sqft

- | | |
|---------------|------------------|
| 1 Car Porch | 8 Master Bedroom |
| 2 Guest Room | 9 Bedroom 2 |
| 3 Wet Kitchen | 10 Bedroom 3 |
| 4 Dry Kitchen | 11 Bedroom 4 |
| 5 Dining Area | 12 Family Area |
| 6 Living Area | |
| 7 Patio | |



